

# BP-500

Advanced Box PC for  
Retail Environments



BP-500 is an high performance box PC that is designed with high flexibility and scalability. BP-500 POS features options of an Intel® Celeron®, Core i3 or i5 processor. This point of sale hardware is ideal for retail applications to optimize store operations.



## Features

### Supports Intel® vPro Technology

Intel vPro is the combination of processor technologies, hardware enhancements, management features and security technologies that allows remote access to the PC (including monitoring, maintenance, and management) independent of the state of the operating system or power state of the PC.



### One-step Quick Replacement of Key Components for Easy Upgrades

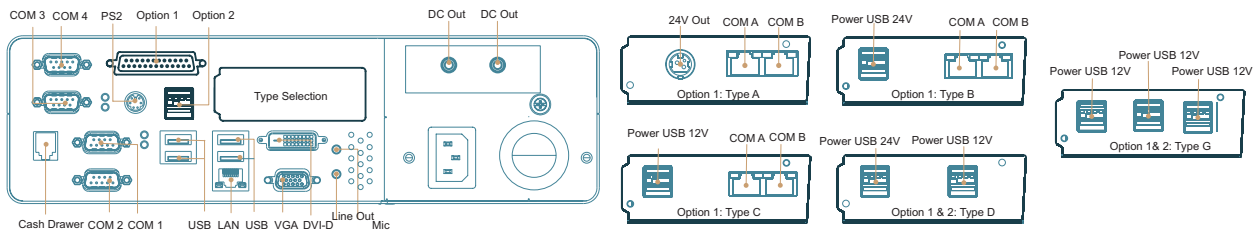
Hardware platform can be easily upgraded by swapping out key components such as motherboard and HDD



### Flexible I/O Connectivity for Various Peripherals

With two I/O panels (1st Standard, 2nd Optional), there are at least 5 options of interchangeable extended I/O panels that can be selected and replaced by system integrators.

## I/O Interface



## Specifications

Model	BP-561	BP-562
Processor	Intel® Celeron® G540, 2.5GHz Intel® Core i3-2120, 3.3GHz Intel® Core i5-3550S, 3.0GHz	Intel® Celeron® B810, 1.6GHz Intel® Core i5-2510E, 2.5GHz (vPro)
System Memory	2GB Standard, Maximum 8GB (1x204-pin DDR3)	
Power Supply	250W Internal ATX Power Supply	
Storage Device	2 x 2.5" SATA HDD (Optional RAID 1 Support)	
Chipset	Intel® H61	Intel® QM67
Construction	Aluminum Die-casting / SECC	
Housing Color	Black with Silver Trim or White with Silver Trim	

I/O Ports	
Serial Port	4 x External: COM 1, COM 2, COM 3, COM 4 (DB9)
USB Port	6 x External (4 Rear + 2 Front)
Cash Drawer Port	1 x RJ11 (12V)
Keyboard / Mouse	1 x PS/2
LAN Port	1 x RJ45 Giga LAN
Audio Port	1 x Line Out, 1 x Mic In
VGA Port	1 x VGA, 1 x DVI-D
DC Output	2 x 12V DC Jack 2.5 mm

Optional I/O		
Option 1: Printer Port	Printer Port + Type A	1 x Bi-directional Parallel port; Serial Port: COM A & COM B (RJ45) with RI / 5V / 12V Selectable; DC Output: 1 x 24V
	Printer Port + Type B (Special Requirements)	1 x Bi-directional Parallel port; Serial Port: COM A & COM B (RJ45) RI / 5V / 12V Selectable; Powered USB Port: 1 x 24V
	Printer Port + Type C	1 x Bi-directional Parallel port; Serial Port: COM A & COM B (RJ45) RI / 5V / 12V Selectable; Powered USB Port: 1 x 12V
	Printer Port + Type D (Special Requirements)	1 x Bi-directional Parallel port; Powered USB Port: 1 x 12V, 1 x 24V
	Printer Port + Type G (Special Requirements)	1 x Bi-directional Parallel port; Powered USB Port: 3 x 12V
Option 2: Powered USB 24V	Powered USB 24V + Type D	Powered USB Port: 1 x 12V, 2 x 24V
	Powered USB 24V + Type G	Powered USB Port: 3 x 12V, 1 x 24V

OS Supported	
Windows	Windows XP, POSReady 2009, Windows 7, POSReady 7, Windows 8
Linux	Per Request

Physical Dimensions	
Dimensions (W x H x D)	310 x 95 x 235 mm

Environment	
EMI / Safety	CE, FCC Class A
Operating Temperature	0°C ~ 40°C (32°F ~ 104°F)
Storage Temperature	-10°C ~ 55°C (14°F ~ 131°F)
Relative Humidity	10% ~ 90% (Non-condensing)